



Training manual for collection center operation



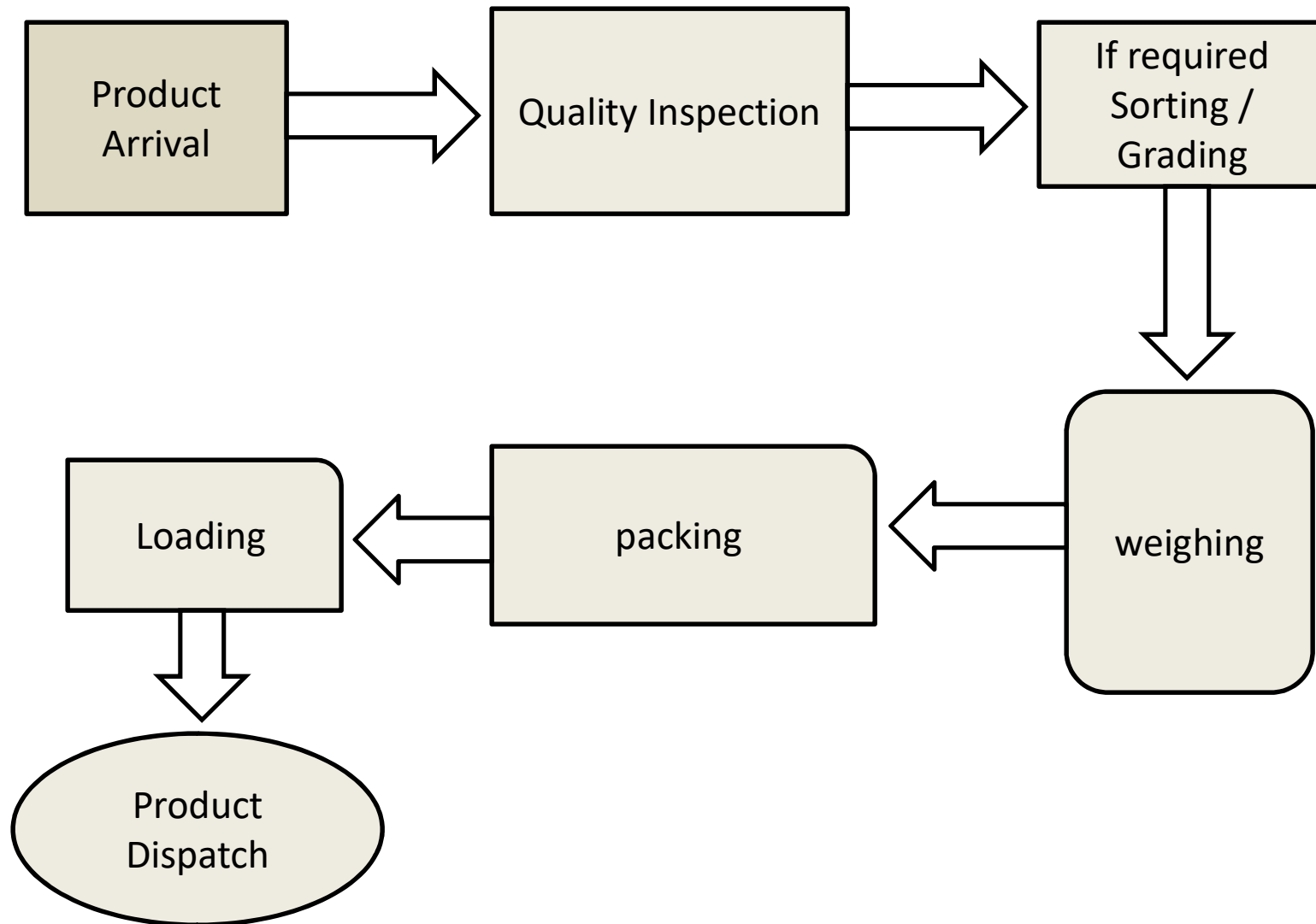


Collection center

- It is the place where vegetables and fruits received from farmers and from other sources are stored for a while and then goes through processing process.
- Objective of collection center is to bring fresh and good quality of fruits and vegetables from farmer's directly
- Processing of fruits and vegetables means their cleaning, separating rotten ones and their packaging.
- Usually fruits and vegetables maximum storing duration in collection center is one day , means in one day the complete recycling of fruits and vegetables does complete.
- It is easily understandable because in case of vegetables they start to rot after two or three days under normal condition.

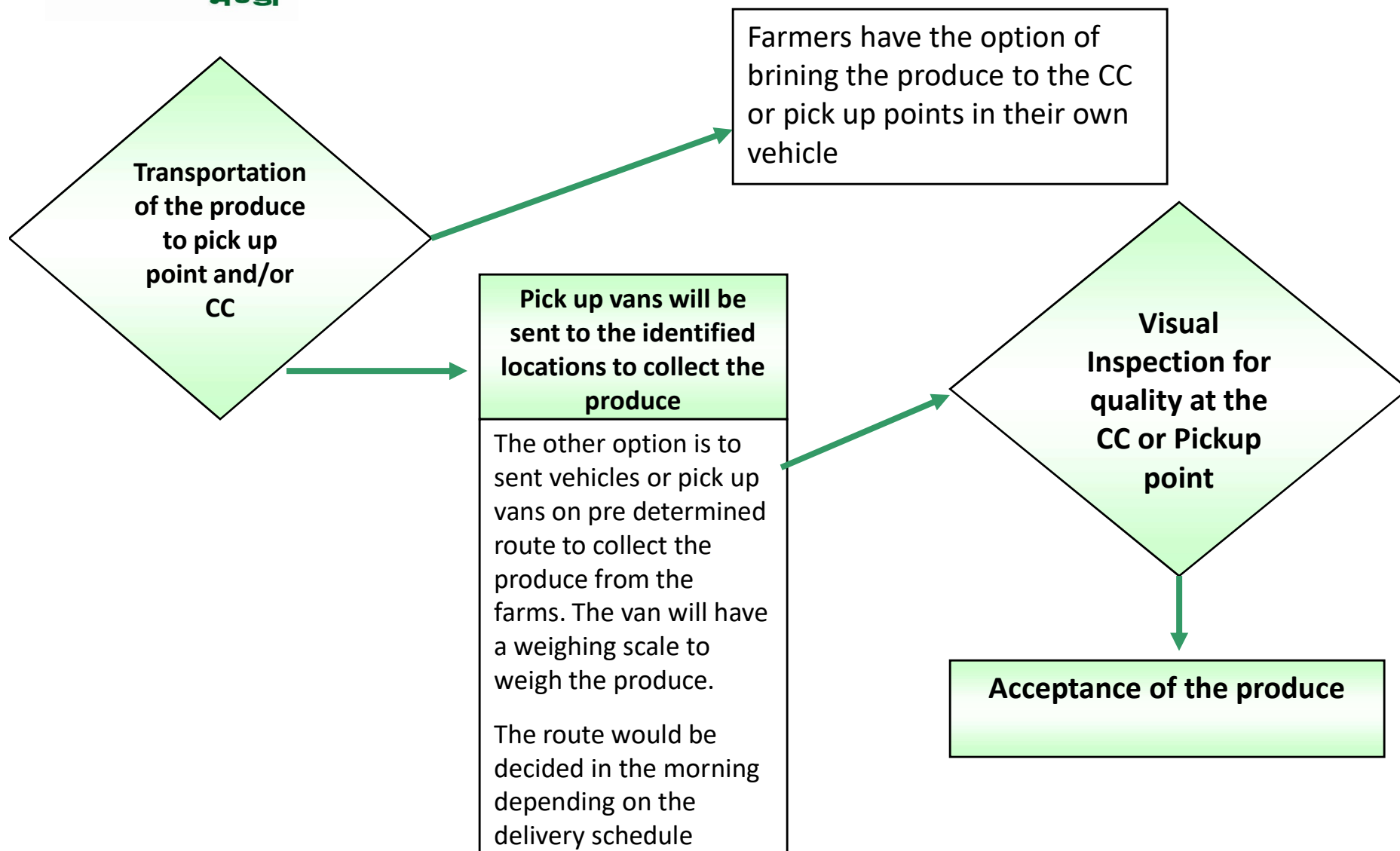


Processing flow in collection center





Process Flow from field to Collection center





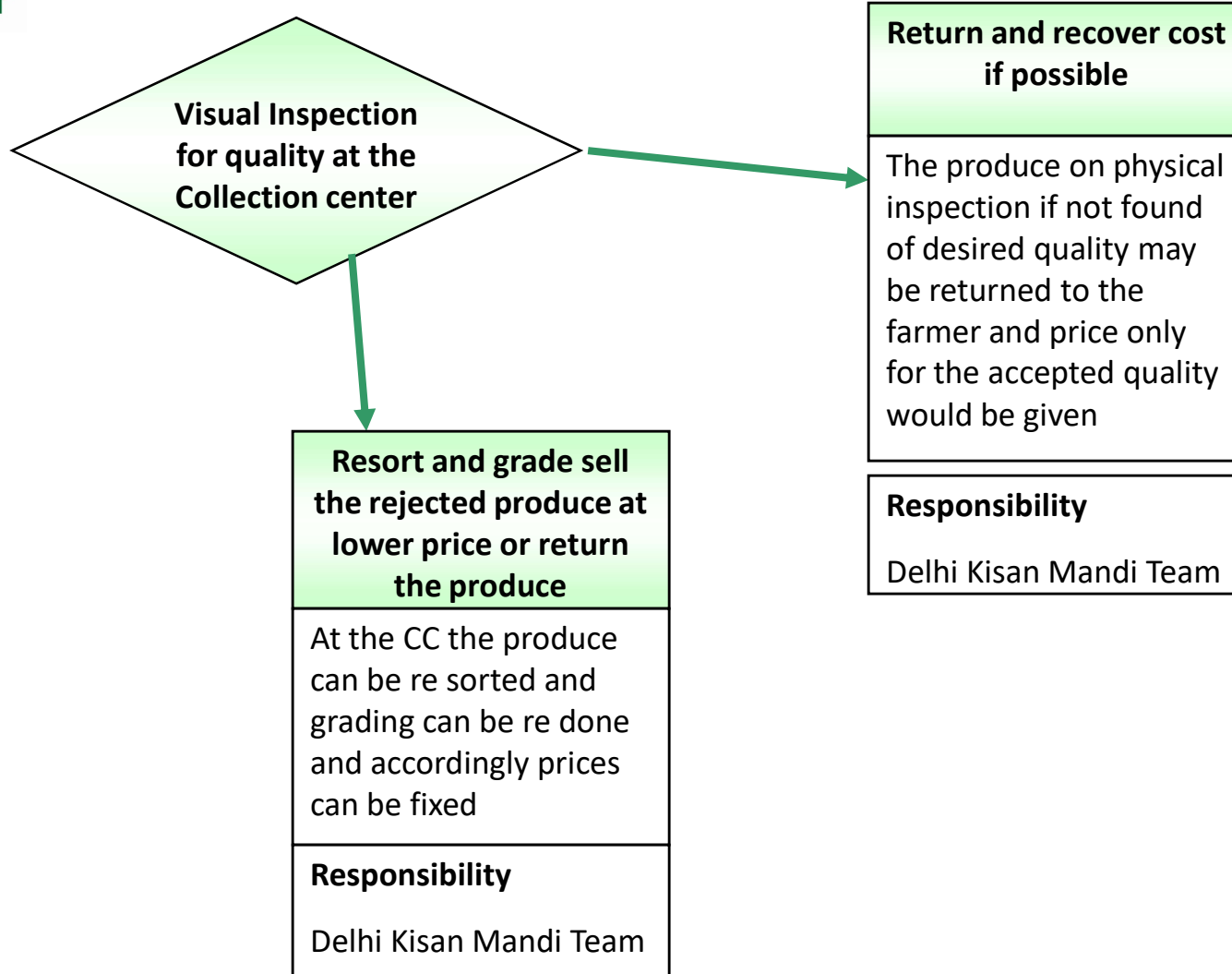
Product Arrival



Arrival of product from field to collection center



Quality Inspection





Quality Inspection



General Characteristics:

Color: Whitish Curds with fresh green colored jacket leaves

Size: The curd must be at least 4 inches (10 cm) in diameter with a weight of 400-800 Grams per Curd.

Texture: The surface of the curd should be compact and firm

Different Grades Available

1. Bigger Curd: More than 1 kg/Curd.
2. Medium curd: 700-800 grams/Curd.
3. Small curds: Less than 400 Grams/Curd

Quality Specifications for Ideal Cauliflower:

- It should be white/cream color and should have shape characteristics of variety.
- Curd should be free from bruises and blemishes
- Curd should be sound and free from any type of disease and insect infestation.
- Cauliflower stem should be maximum 8-10 cm. long from the lowest periphery of the curd and leaf should be trimmed up to the level of curd surface.

Criteria for Rejection:

- Extra large and over-mature (Spreading Curds) curds are rejected.
- Reject curds having hollow stem structure attached to the curds
- Reject yellow or pink colored Curds
- Reject Curds with black or yellow spots
- Reject Curds infested with green worms (Larvae)

***Quality Parameter for Inspection**



Sorting & Grading



*If required Sorting & grading done at collection center in the present of Delhi kisan mandi team .



Weighing



Weighment of accepted volume

Weighment of the
produce accepted at
the CC will be done
for which Weighing
machine will be
provided

Responsibility

Delhi Kisan Mandi Team



Packing



*Packing done according to the requirement of buyer's.



Loading & Dispatch of vehicle



*Loading and dispatch of vehicle to the buyer's place.



Thank You